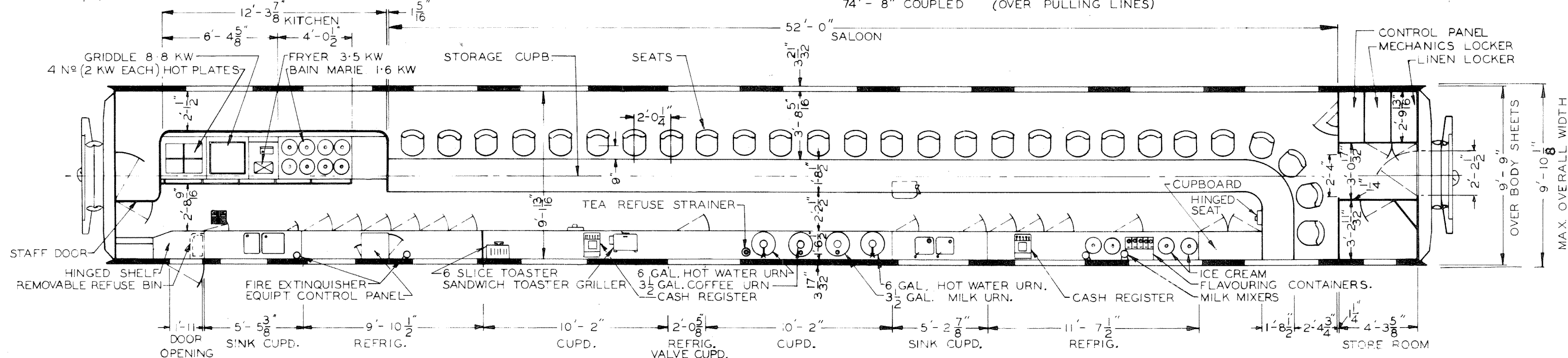


27 PASSENGERS - SEATED.  
 AIR CONDITIONING - 415 VOLT 50 f HEAD END SUPPLY,  
 AIR CONDITIONING CAPACITY 7 TONS, REFRIGERANT FREON 12.  
 BUILT AT NEWPORT AS:-  
 WIMMERA 1938 CONVERTED TO 2 VRS 1932  
 MITTA MITTA 1939. CONVERTED TO 1 VRS 1962.

TOTAL 2



NOTE:- BOTH CARS FITTED WITH  
 AIR DUCT FORMED BY ROOF & CEILING. DISTRIBUTION THROUGH TEA - POT MOULDS.  
 ALUMINIUM SUB. FLOOR.  
 INCANDESCENT LIGHTING.  
 A.C. PRECONDITIONING.  
 STA. STEEL PANELS. (KITCHEN SIDE WALL)  
 3/16" LLOYD HARDBOARD WITH PAINT FINISH (CORRIDOR SIDE WALL)  
 PUBLIC ADDRESS - SPEAKERS ONLY.  
 AIR HEATERS 5250 WATTS.

CAST STEEL ROLLER BEARING BOGIES.  
 WHEELS 3'-0 1/4" DIA.

GENERAL ARRANGEMENT.	VRS 1433i & LBT. 7424
BODY ARRANGEMENT	L.B.T. (CTS) 10 B
UNDERFRAME ARRANGEMENT	L.B.T. (CTS) 10 A
FLOOR AREA	650 SQ. FT.
WATER CAPACITY - COLD	350 GALLONS
WATER CAPACITY - HOT	16 GALLONS
BOGIES 4'-8 1/2" GAUGE	B.K. 5341.
TARE	51 - 12 - 2 - 0
BRAKE CYLINDER	16" DIA X 12" STROKE
BRAKE % AIR	85.0 % TARE
BRAKE % HAND	54.3 % TARE

VICTORIAN RAILWAYS	
CLASS	VRS
BUFFET CAR	