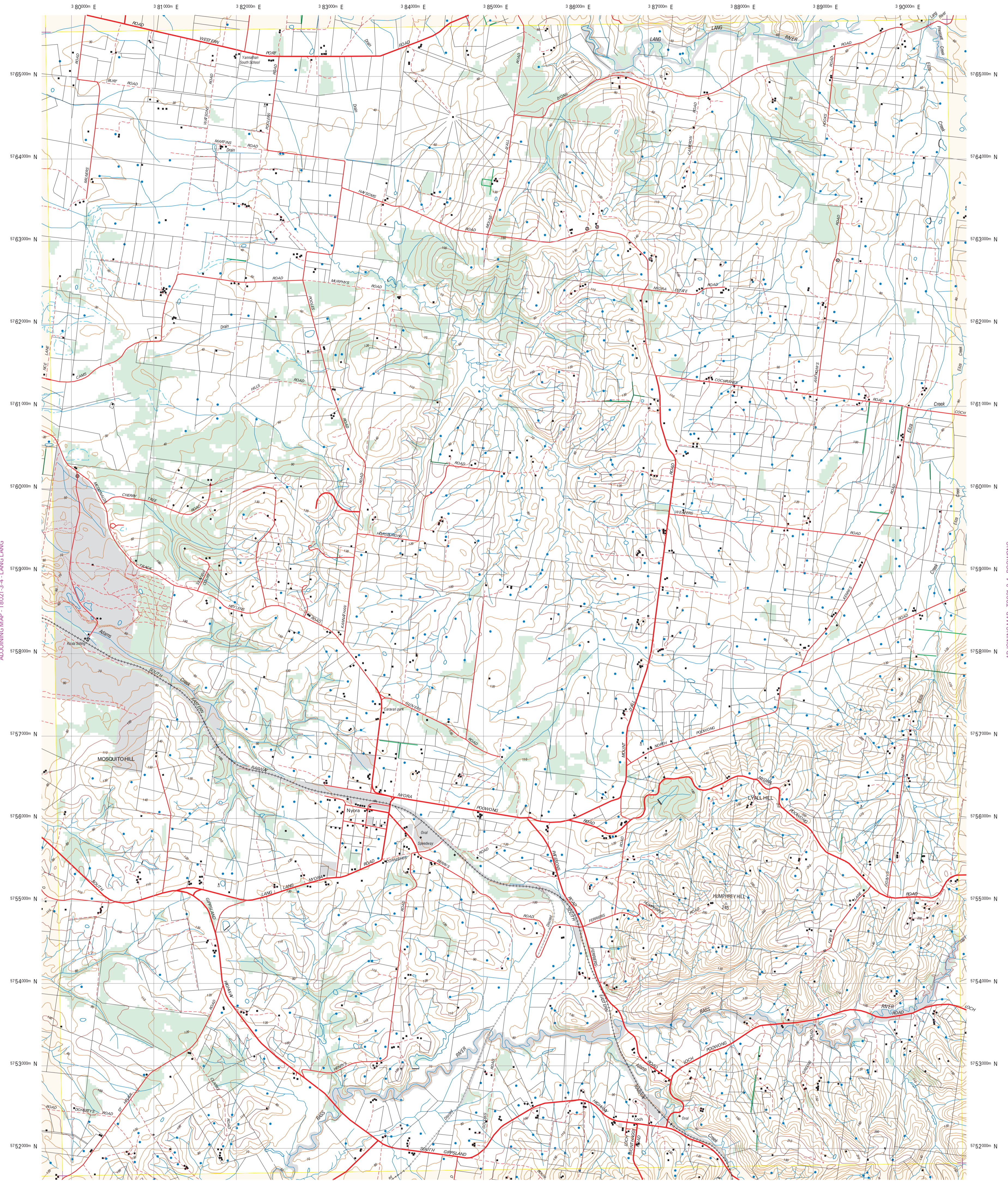


+ LAT. LONG. OF THE 1:25000 MAPSHEET CORNER 38° 15' 00" 145° 37' 00"

ADJOINING MAP - T8021-4-2 - CATANI

+ LAT. LONG. OF THE 1:25000 MAPSHEET CORNER 38° 15' 00" 145° 45' 00"



ADJOINING MAP - T8021-3-4 - LANG LANG

ADJOINING MAP - T8021-2-4 - POOWONG

+ LAT. LONG. OF THE 1:25000 MAPSHEET CORNER 38° 23' 00" 145° 37' 00"

ADJOINING MAP - T8021-3-2 - JEETHO

+ LAT. LONG. OF THE 1:25000 MAPSHEET CORNER 38° 23' 00" 145° 45' 00"

MAP CREATED BY FIRE MANAGEMENT BRANCH FROM NRE AND OTHER DATA
 This map has been produced automatically using DNRE Corporate Geospatial Library data.
 Before using this map refer to file - DATAQUALITY.PDF
 - Crown land information sourced from Land Information Management System (LIMS).
 - Tree Cover change sourced from 1:100 000 TREE CHANGE (1995) - TCH00_9095.
 - Topographic data sourced from the 1:25 000 topographic layers.

STATE GOVT. PUBLISHED MAPSHEET - NYORA 8021-3-1 (VIC)
 AUSLIG 1:100 000 MAPSHEET - WARRAGUL 8021

FILE REF: T8021-3-1.PDF - VERSION 1.0 - File Produced March 14, 2000

- Crown Land (LIMS)
- Extent of tree cover over Freehold land (1995)
- Main road - sealed
- Main road - unsealed
- Minor road - urban
- Vehicular track / Access Road
- Walking track (Trail - foot)
- Railway Line / Spur
- Tameway
- Disused Railway
- Tunnel
- Causeway
- Electric transmission line
- Pipeline (other than water)
- Wall / Fence
- Mine / Quarry
- Landmark Area boundary
- State or Territory
- Restricted Area
- Coastline
- Coastal Plat
- Embankment / Cutting
- River flat
- Swamp / perennial
- Double line Stream
- Water pipeline
- Jetty Boat Ramp
- Intermediate Contour
- Index Contour Decimetres
- Depression Contour Decimetres
- Index Depression Contour Decimetres
- Cliff
- Windbreak
- Buildings
- Windmill / Windmop
- Railway Station
- Ruins
- Gate
- Cattle grid
- Helipad
- Mine
- Tank (Storage)
- Silo
- Pylon
- Small quarry
- Geographical station
- Rock
- Waterhole
- Sinkhole
- Spring
- Falls
- Dam or weir
- Swimming pool
- Bore

0 250 500 750 1000 1250 1500 1750 2000 2250 2500
metres

AMG ZONE 55
 MAP ANGLE - GRID NORTH
 HORIZONTAL DATUM: AUSTRALIAN GEODETIC DATUM 1966
 VERTICAL DATUM: AUSTRALIAN HEIGHT DATUM
 TRANSVERSE MERCATOR PROJECTION
 GRID INTERVAL 1000 METRES - ONE GRID SQUARE = 100 HECTARES
 GRID-MAGNETIC ANGLE FOR THE CENTRE OF THIS MAP
 11° 16'

FIRE MANAGEMENT BRANCH - DEPARTMENT OF NATURAL RESOURCES AND ENVIRONMENT

FIRE MANAGEMENT BRANCH - DEPARTMENT OF NATURAL RESOURCES AND ENVIRONMENT